

WEEDS, BUGS AND WATER



Good, bad and what to do

Good (or better) weeds

- **Edible weeds**
- **Dandelion** – calcium, iron, antioxidants
- **Purslane** -Omega 3 and Vit C
- **Lambs' quarters** – poor man's spinach- related to quinoa
- **Red clover** –medicine/ green manure
- **Japanese knot weed** – Invasive-sour rhubarb,
- **Watercress** –beware pollution –vits A,C , folic acid

Dandelion



Purslane



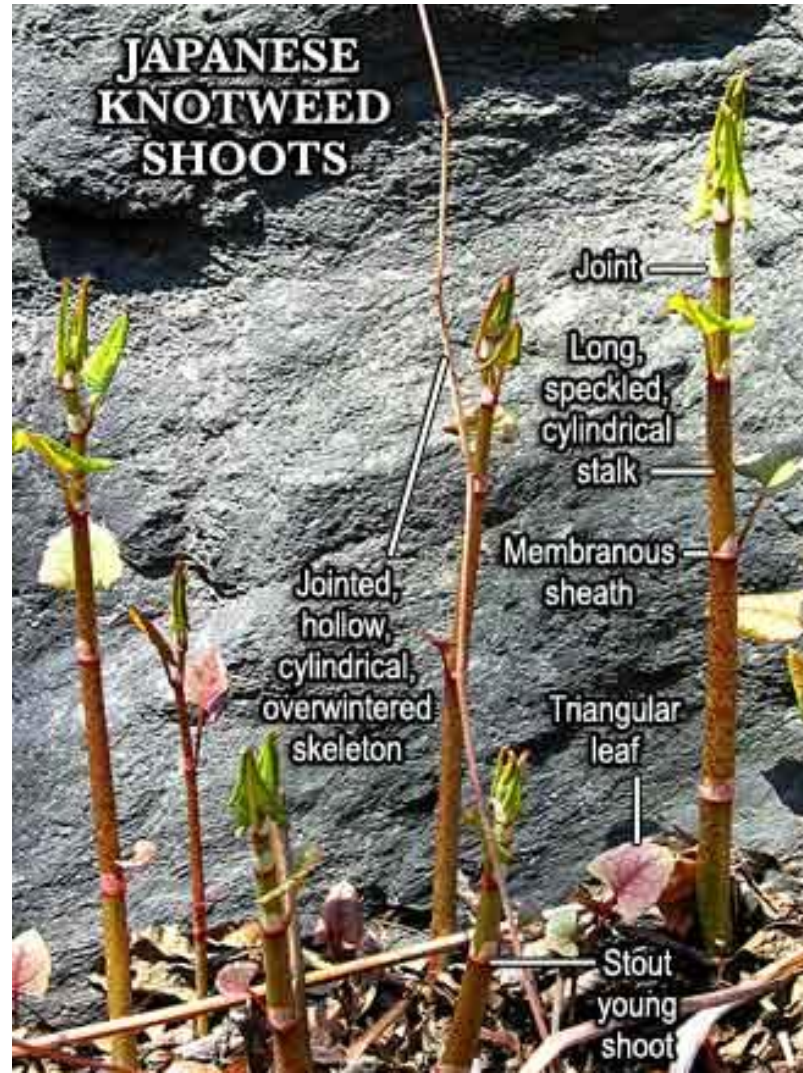
Lamb's quarters



Red Clover



Japanese knotweed - INVASIVE



Watercress- BEWARE



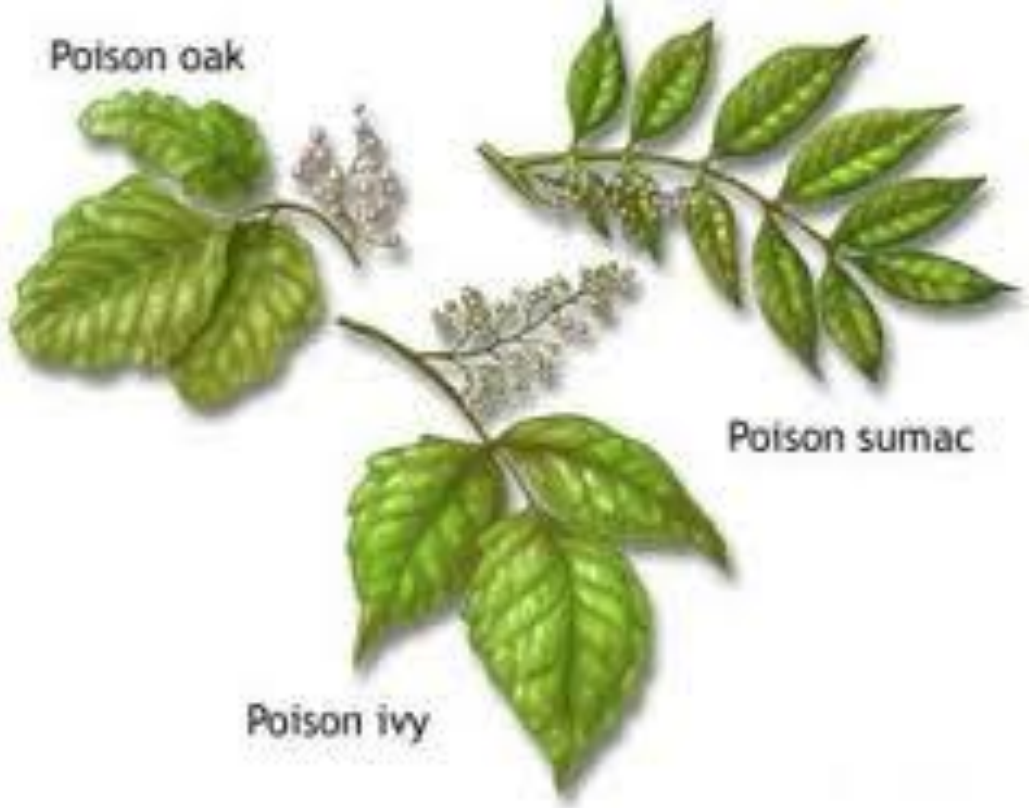
Bad weeds

- **Crabgrass**
- **Poison ivy - allergies**
- **Prickly lettuce**
- **Ragweed- allergies**
- **Redroot pigweed**
- **Japanese knotweed –invasive**
- **Canada Thistle-invasive**
- **Dandelion-seeds**

Crabgrass



Poison Ivy



Prickly lettuce



Ragweed (not golden rod)



Redroot pigweed (not amaranth)



Canada Thistle – Invasive



When to weed?

- 10 days before planting (deep digging)
- 2 days before planting (hoe over)
- 10 days after planting –(between rows)
- After that depends on crop and type of weed.
- Fall weeding – before first frost
- Fall clear off all weeds
- Spring weeding – not before ground dries out

“Green manure” stops weeds

- If you grow cover crops (green manure) it stops weeds
- Best for this area :
- **Buckwheat** – summer and fall
- **Rye or winter wheat** fall into winter or early spring
- **Oats** – spring – dig in
- **Clover and legumes** – plant in spring

Bad bugs

- Cucumber beetle
- Colorado potato beetle
- Flea beetles
- Slug
- Aphids
- Tomato hornworm
- Cutworm

Colorado potato beetle



Cucumber beetle



Flea beetle



Slug



Aphids



Tomato hornworm



Cutworm



Good bugs

- Honey Bees, solitary bees and bumblebees
- Tachinid flies
- Ground beetles
- Lacewings
- Lady bugs
- Parasitic wasps(parasitoid)
- Aphidius wasps
- **What'sthat bug.com**

Bees



Tachinid flies



Black+ other ground beetles



Lacewings



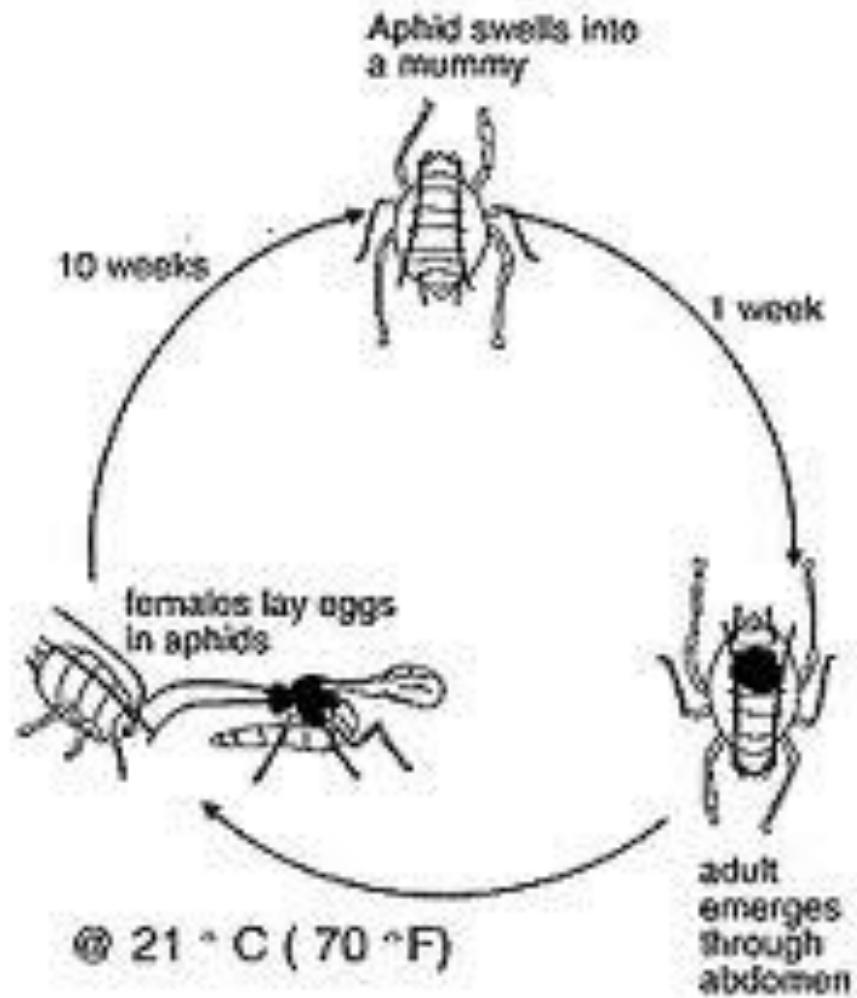
Lady bugs



Parasitoid wasps



Aphidius wasp



WATER-ING!

- PROBLEMS :
- Too little
- Too much
- Leaching
- Powdery mildew
- Sun scorch



Sun scorch



When, where , how

- Early morning , late afternoon
- Not on leaves – at base of plants
- Make a basin ?
- Dig in pop bottles
- Soaker hoses



- **1 inch** water per week- **once a week**

Soaker hose

